



# Industrial/Commercial Lots

**11+ Acres**

**Reeves County | Pecos, TX 79772**



**Presented By:**

**Caleb Matott, Broker/Owner**

[RanchSpecialist@CMRanchRealEstate.com](mailto:RanchSpecialist@CMRanchRealEstate.com) | 432-349-3330

# Industrial/Commercial Lots 11+ Acres FM Road 869 | Pecos, TX



Presented By:  
**Caleb Matott, Broker/Owner**  
432-349-3330  
[BigDogRanchSales@mac.com](mailto:BigDogRanchSales@mac.com)

## CM Ranch Real Estate

6800 W. County Rd. 48 | Midland, TX 79707 | 432-219-2220 | [RanchSpecialist@CMRanchRealEstate.com](mailto:RanchSpecialist@CMRanchRealEstate.com)

[www.CMRanchRealEstate.com](http://www.CMRanchRealEstate.com)



## Property Details:

Approximate Building Sq. Ft.	N/A
Lot Size:	11+ Acres
Current Zoning:	Commercial/No Restrictions
County:	Reeves

## Property Overview:

Located just minutes from Pecos, Texas in Reeves County and only one mile south of I-20, is a new Industrial/Commercial Development, Pecos Corpus Subdivision. With great water and only \$15,000 per acre of raw land these lots will not last long. Asphalt millings can be provided for an additional price per acre. These Industrial tracts have great access to I-20 with frontage to paved FM Rd 869. No Commercial/Off-Site Water sales allowed.

- 11.034 Acres – LOT 1, BLK 1
- 13.842 Acres – LOT 13, BLK 1
- 14.827 Acres – LOT 2, BLK 2

[Property Website](#)

Copyright © 2018 CM Ranch Real Estate. All Rights Reserved.

Presented By:  
**Caleb Matott, Broker/Owner**  
432-349-3330  
[BigDogRanchSales@mac.com](mailto:BigDogRanchSales@mac.com)

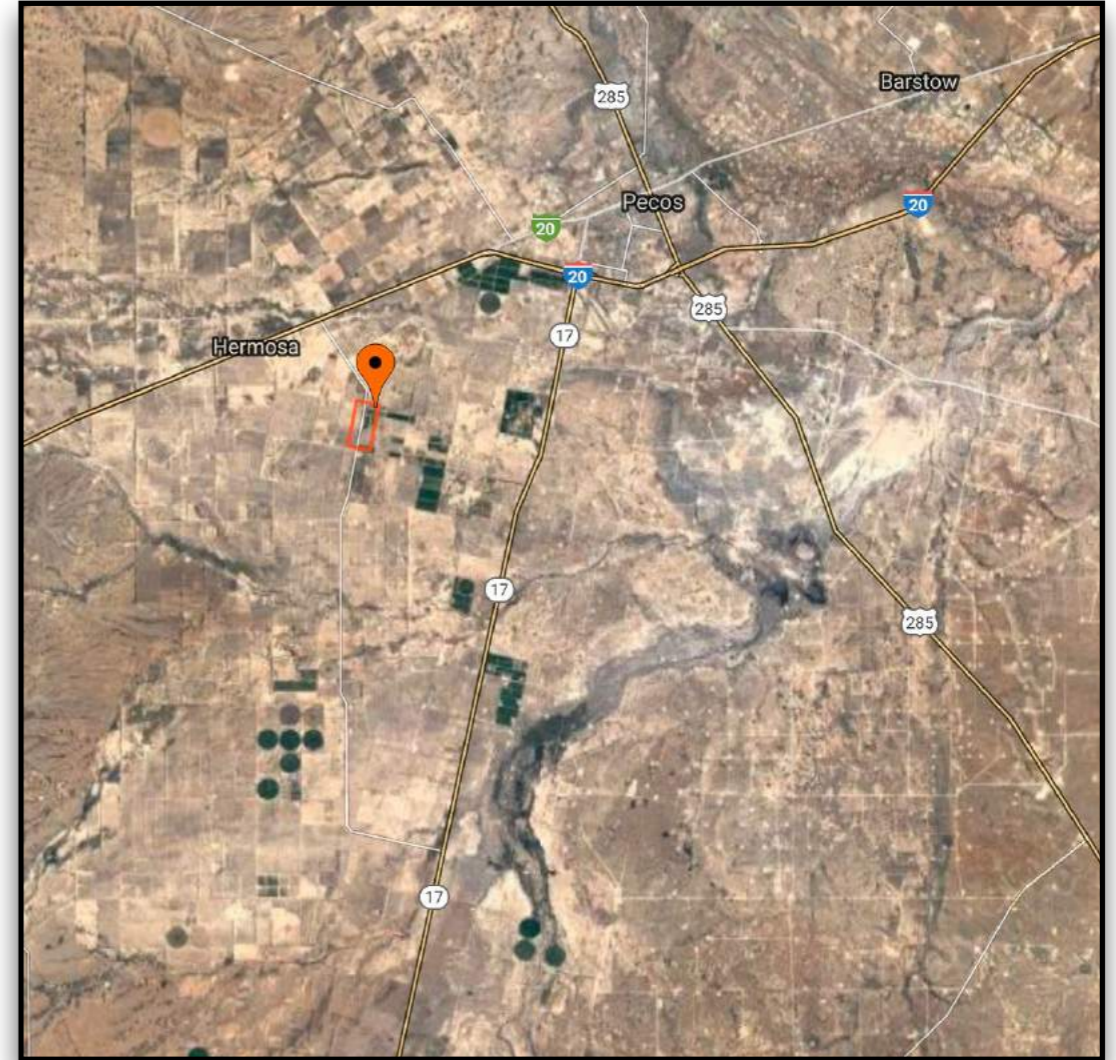
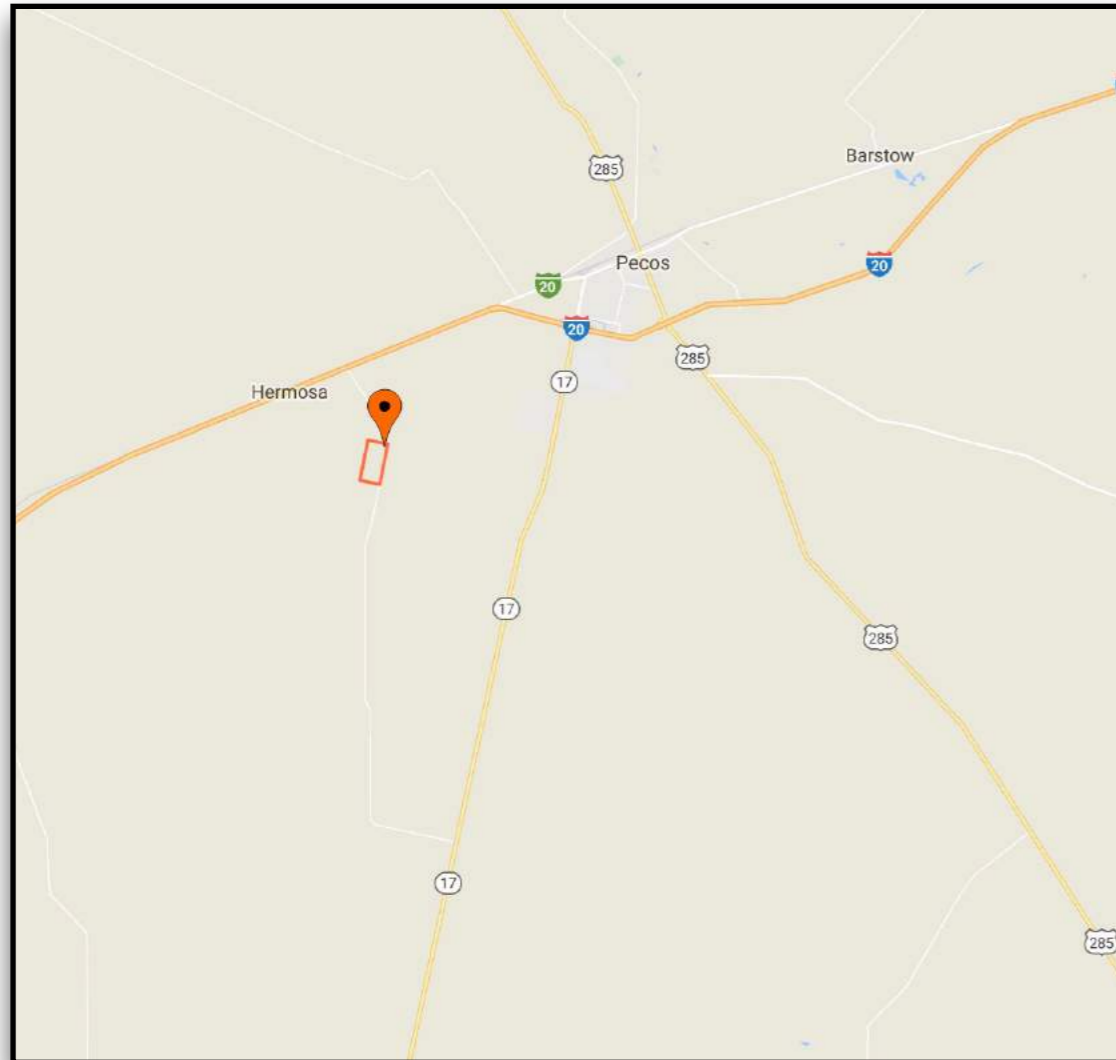
# CM Ranch Real Estate

6800 W. County Rd. 48 | Midland, TX 79707 | 432-219-2220 | [RanchSpecialist@CMRanchRealEstate.com](mailto:RanchSpecialist@CMRanchRealEstate.com)

[www.CMRanchRealEstate.com](http://www.CMRanchRealEstate.com)

# FM Road 869 Pecos, TX 79722

## \$15,000.00 per acre



### **Click for Interactive Property Map**

Texas law requires all real estate licensees to give the following information about brokerage services to prospective buyers, tenants, sellers, & landlords.

#### **Information About Brokerage Services**

**DISCLAIMER – This property offering is subject to prior sale, change in price, or removal from market without notice.  
While the information provided is deemed reliable, it is not guaranteed by Caleb Matott or CM Ranch Real Estate.**

Presented By:  
**Caleb Matott, Broker/Owner**  
432-349-3330  
[BigDogRanchSales@mac.com](mailto:BigDogRanchSales@mac.com)

## CM Ranch Real Estate

6800 W. County Rd. 48 | Midland, TX 79707 | 432-219-2220 | [RanchSpecialist@CMRanchRealEstate.com](mailto:RanchSpecialist@CMRanchRealEstate.com)

[www.CMRanchRealEstate.com](http://www.CMRanchRealEstate.com)